

Liquid Filled Stainless Case Gauges

- ASME B40.1, Grade B (+/- 3-2-3% accuracy)
- Helical wound bronze bourdon tube (**1000 PSI** and above)
- White aluminum dial with black numbers and black aluminum pointer
- PowerFlex™ movement with polyester segment designed to resist the effects of shock, vibration and pulsation.
- 1/4" NPT brass connection
- Glycerin liquid fill
- Ambient temperature range **20°F to 150°F**

Air Fittings

2 1/2" Face
1/4" Lower Mount

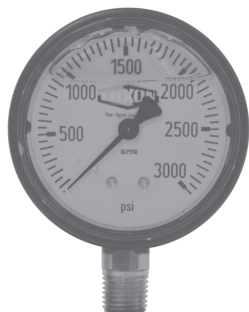
PSI	Fig. Inter.	Minor Grad.	Part #	Price/E
0-15	1	.5	GLS400	\$37.00
0-30	5	.5	GLS405	37.00
0-60	5	1	GLS410	37.00
0-100	10	2	GLS415	37.00
0-160	20	5	GLS417	37.00
0-200	20	5	GLS420	37.00
0-300	30	5	GLS425	37.00
0-400	50	10	GLS427	37.00
0-600	50	10	GLS430	37.00
0-1000	200	20	GLS435	41.00
0-1500	300	50	GLS440	41.00
0-2000	400	50	GLS445	41.00
0-3000	500	100	GLS450	41.00
0-5000	1000	100	GLS455	41.00



2 1/2" Face
1/4" Center Back Mount

PSI	Fig. Inter.	Minor Grad.	Part #	Price/E
0-15	1	.5	GLSC400	\$45.00
0-30	5	.5	GLSC405	45.00
0-60	5	1	GLSC410	45.00
0-100	10	2	GLSC415	45.00
0-160	20	5	GLSC417	45.00
0-200	20	5	GLSC420	45.00
0-300	30	5	GLSC425	45.00
0-400	50	10	GLSC427	45.00
0-600	50	10	GLSC430	45.00
0-1000	200	20	GLSC435	51.00
0-1500	300	50	GLSC440~	51.00
0-2000	400	50	GLSC445	51.00
0-3000	500	100	GLSC450	51.00
0-5000	1000	100	GLSC455	51.00

Liquid Filled ABS Case Gauges



2 1/2" Face
1/4" Lower Mount

PSI	Fig. Inter.	Minor Grad.	Part #	Price/E	PSI	Fig. Inter.	Minor Grad.	Part #	Price/E
0-15	1	.5	GLP500	\$29.00	0-400	50	10	GLP527	\$29.00
0-30	5	.5	GLP505	29.00	0-600	50	10	GLP530	29.00
0-60	5	1	GLP510	29.00	0-1000	200	20	GLP535	33.00
0-100	10	2	GLP515	29.00	0-1500	300	50	GLP540	33.00
0-160	20	5	GLP517	29.00	0-2000	400	50	GLP545	33.00
0-200	20	5	GLP520	29.00	0-3000	500	100	GLP550	33.00
0-300	30	5	GLP525	29.00	0-5000	1000	100	GLP555	33.00

180° Steam Gauge Siphon

SAFETY
ALERT

In order to prevent live steam from entering a pressure gauge bourdon tube, a siphon filled with water should be installed between the gauge and the process line. If freezing of the condensate in the loop of a siphon is a possibility, a diaphragm seal should be used to isolate the gauge from the process steam. *Also use siphons whenever condensing hot vapors (not just steam) are present.*



Size	Part #	Price/E
1/4"	401-01	\$19.75

- 1/4" standard weight red brass pipe
- Complies with ASTM B-43
- Withstands combined pressure of **200 PSI** and **406°F**