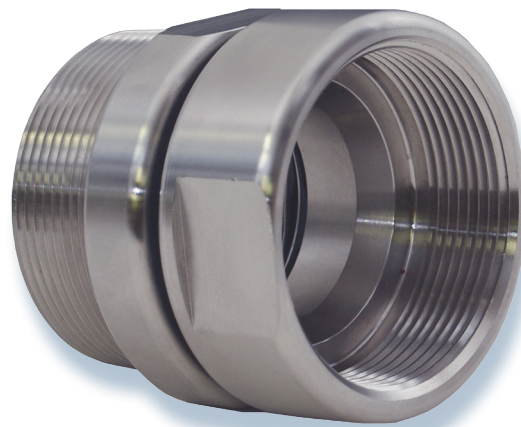




The Right Connection™

Stainless Steel Hose Swivels

Swivel function - allows the hose to relax to it's natural rest position while allowing freedom of movement without adding torque stress at the point of connection (torque stress is the largest single cause of composite, PTFE and stainless steel hose failure).

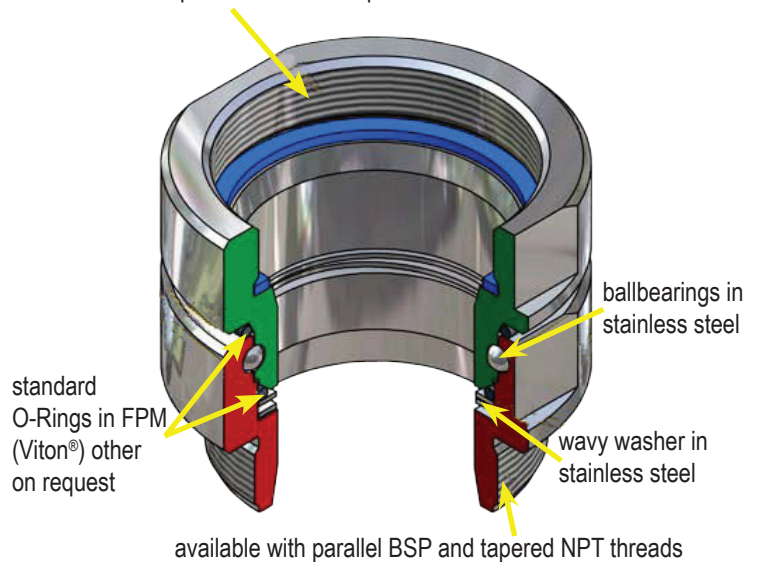


Features

- simple design, low maintenance - each unit consists of two 316 stainless body halves, ball bearings and a washer
- Viton® seals are standard, Chemraz® and Kalrez® are optional
- working pressure: **150 PSI**

Size	Part #
¾"	HS075SS
1"	HS100SS
1½"	HS150SS
2"	HS200SS
3"	HS300SS
4"	HS400SS

available with parallel BSP and tapered NPT threads



Dixon Valve & Coupling Co.
 800 High Street • Chestertown, MD 21620
 ph 800.355.1991 • fx 800.283.4966
www.dixonvalve.com