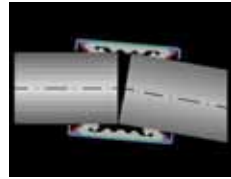




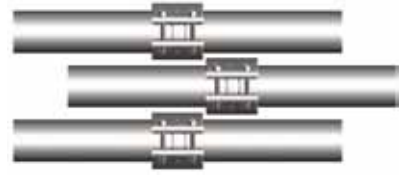
Straub Open-Flex 1L Couplings

Joins like or dissimilar pipe materials: steel, galvanized, painted, stainless steel, thin-wall stainless steel, PVC, copper

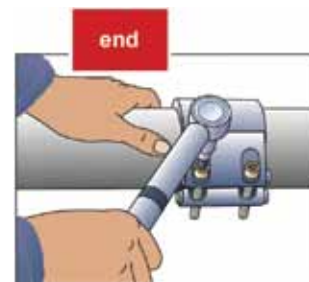
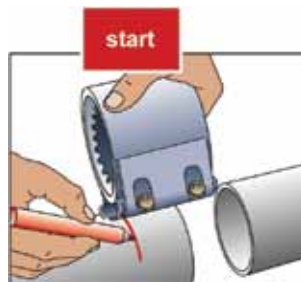
- Joins like or dissimilar pipe materials: steel, galvanized, painted, stainless steel, thin-wall stainless steel, PVC, copper
- Requires no special tools or pipe-end preparation; only a torque wrench is required for a secure and safe pipe connection that seldom needs retightening.
- highest quality 316 Ti stainless steel construction
- accommodates up to 5° of pipe misalignment
- vary gap between pipe ends
- absorbs vibration, water hammer, and sound
- acts as an expansion joint; will accept up to .25" of axial movement
- 5 year limited warranty
- reusable
- conforms to ASTM 1476, Type 2, Class 3 specifications



Accommodates up to 5° of pipe misalignment



Lends itself well to confined areas



Straub couplings eliminate the need for threading, flanging, galling and welding. Coupling installation takes minutes instead of hours.



Straub Open-Flex 1L Couplings

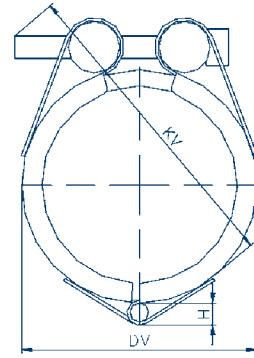
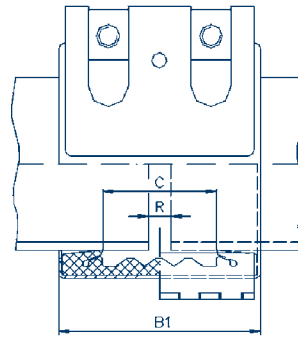
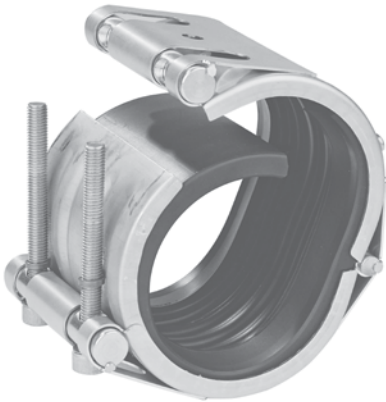
Straub Open-Flex 1L couplings are suitable for repairing or joining pipes where access to the pipe end is difficult or not possible. This unique wrap-around design differs from similar type repair products because the installation or repair is permanent due to the unique flexible lipseal gasket design. Open-Flex couplings will also act as an expansion joint. *Straub Open-Flex couplings do require the pipes to be properly anchored and restrained as they are not pull-out resistant like the Straub Grip-L couplings.* Use Straub Open-Flex couplings to replace bolted sleeve type couplings (AWWA Std. C-219) or for permanent repairs or installation.

Specifications:

- casing: AISI 316Ti
- screws: AISI 4135 steel
- bolts: AISI 12L 14 Galvanized
- EPDM sealing sleeve: temperature range - 4°F to 176°F (-20°C to 80°C)

Approvals:

- American Bureau of Shipping (ABS) up to 232 PSI
- Underwriter's Laboratories (UL)
- National Sanitation Foundation (NSF)



Size	Pipe OD range		Working Pressure PSI	Coupling Dimensions			Assembled Dimensions		Max. Distance Between Pipe End R	Weight (lbs.)	Stainless Steel Part #
	actual	min to max		B	C	H	DV	KV			
1½"	1.90"	1.85" to 1.95"	363	3.0"	1.4"	.28	2.8"	3.3"	.20"	1.10	STR35001
2"	2.38"	2.32" to 2.42"	232	3.0"	1.4"	.28	3.2"	3.7"	.20"	1.34	STR35151
2½"	2.88"	2.81" to 2.93"	232	3.0"	1.4"	.36	3.2"	3.7"	.20"	1.80	STR35201
3"	3.50"	3.44" to 3.56"	232	3.7"	2.0"	.36	4.4"	4.9"	.20"	2.10	STR35351
4"	4.50"	4.43" to 4.57"	232	3.7"	2.0"	.36	5.4"	5.9"	.20"	2.33	STR35651
5"	5.56"	5.49" to 5.57"	232	4.2"	2.4"	.38	6.4"	7.1"	.20"	3.20	STR35901
6"	6.63"	6.54" to 6.71"	232	4.2"	2.4"	.38	7.5"	8.1"	.20"	3.70	STR36051

SAFETY
ALERT

Not pull-out resistant.

Ensure that pipes are properly anchored and supported.

Assembly tool available,
STR6648



Dixon Valve & Coupling Co.
800 High Street
Chestertown, MD 21620



The Right Connection™
Printed in the USA

877.963.4966
Fax: 800.283.4966
www.dixonvalve.com