



The Right Connection™

Safety Break-away Couplings Breaking Bolt Series

Designed to minimize spillage and damage associated with drive away and pull-away incidents

Industrial Version

The breaking bolt industrial breakaway coupling is designed to minimize spillage and damage associated with drive away and pull away incidents.

- **designed to be installed between a fixed point (pipe, pump, manifold) and a hose**
- coupling automatically senses an excessive load, closes the valves and disconnects
- high flow rate / low pressure drop
- female NPT is standard, optional ANSI / DIN flanges or male NPT are available
- stainless steel or aluminum
- working pressure: stainless steel **360 PSI** and aluminum **230 PSI** at ambient temperature (70°F)
- Viton® is standard seal



Size	Width	Length	Weight in Lbs.		Flow Rate / GPM	DN	Stainless Steel Part #	Aluminum Part #
			stainless	aluminum				
2"	4.5"	7"	5	3	200	50	SBC200SS	SBC200AL
3"	6.8"	11"	18	8	650	80	SBC300SS	SBC300AL
4"	8.3"	12"	34	14	800	100	SBC400SS	SBC400AL
5"	10.6"	14"	71	27	1100	125	SBC500SS	SBC500AL
6"	12"	16"	101	35	1500	150	SBC600SS	SBC600AL
8"	13.5"	17.7"	157	66	3700	200	SBC800SSFL¹	---

¹ 150# ASA flange

Marine Version

The breaking bolt marine version break-away coupling is designed to minimize spillage and damage associated with pull-away incidents.

- **designed to be installed within a hose string where the coupling will have a length of hose attached to both sides**
- typical applications include: ship-to-offshore platform and ship-to-ship product transfer operations
- coupling automatically senses an excessive load, closes the valves and disconnects
- release is executed when force causes bolts to break
- female NPT is standard, optional ANSI / DIN flanges or male NPT are available
- working pressure: **360 PSI** at ambient temperature (70°F)
- 316T1 stainless steel body with Viton® O-rings



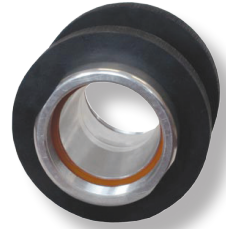
Size	Width	Length	Weight in Lbs.	Flow Rate / GPM	DN	Stainless Steel Part #
3"	6.8"	11"	18.8	650	80	MSBC300SS
4"	8.3"	12"	34.1	800	100	MSBC400SS
5"	10.6"	14"	71	1100	125	MSBC500SS
6"	12"	16"	101	1500	150	MSBC600SS
6"	12"	16"	101	1500	150	MSBC600SSFL¹
8"	13.5"	17.7"	157	3700	200	MSBC800SSFL¹

¹ 150# ASA flange

Optional Non-Closure Version

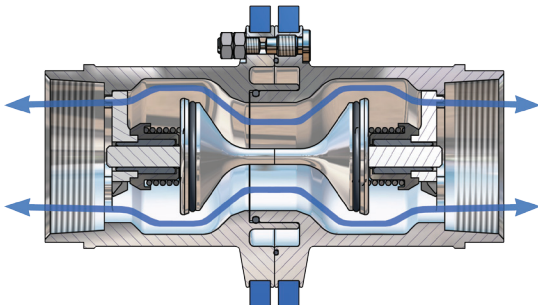
The non-closure design is an economical alternative which allows the coupling to break away due to pull-away/drive-away incidents thus protecting piping systems and equipment. This design allows spillage of product in these instances due to the lack of valving in the coupling.

Useful in applications where non-hazardous product is being conveyed and where there are no environmental concerns. Available in both Industrial and Marine versions. Consult the factory for more information.



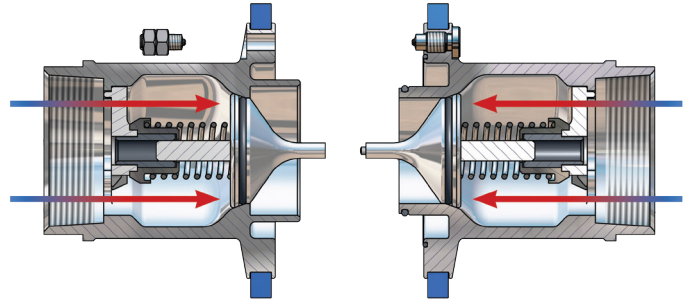
How It Works

Safety break-away couplings have three external break bolts. In the case of axial tension all of the bolts take up the force corresponding to the break force on the hose with a safety margin. Non-axial forces concentrate the tension forces more strongly on one bolt, so that the safety break-away coupling reacts in a natural way to the reduction of the hose break forces.



BEFORE emergency disconnect

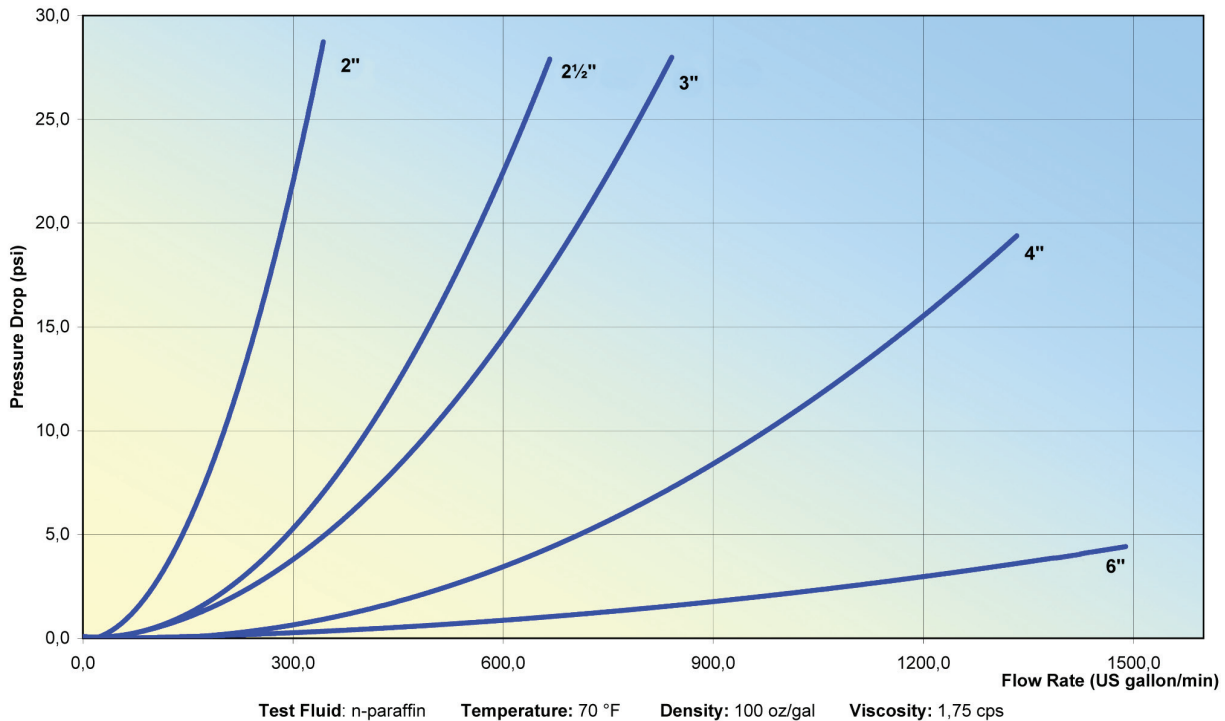
The safety break-away valve consists of two halves, each with a valve that has an O-ring seal.



AFTER emergency disconnect

When the safety break-away couplings separate, it allows the valves to close. The two valves close rapidly, minimizing exposure to personnel and the environment.

Pressure Drop



Dixon Valve & Coupling Co.
 800 High Street • Chestertown, MD 21620
 ph 800.355.1991 • fx 800.283.4966
www.dixonvalve.com