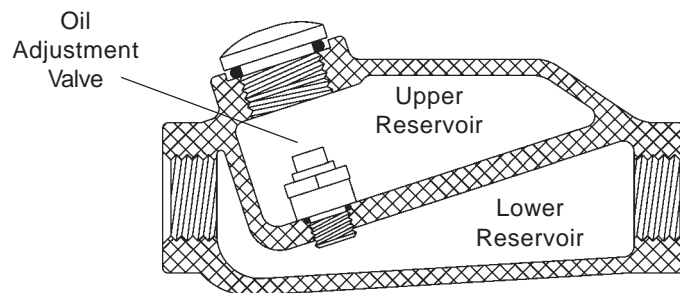


Instructions for Installing, Operating and Maintaining Series PL In-Line Lubricators

Designed for use with hose-connected tools that are too far from the compressor to be lubricated by a permanently mounted unit.

- The minimum flow rate that must be achieved for the PL series lubricators to work is 30 SCFM. A flow rate less than 30 SCFM will not create the pressure difference needed between chambers to force the oil into the air stream.
- Install within 25 feet of the air tool requiring lubrication, refer to the arrow for proper air flow direction
- Transparent sight disc allows visual inspection of oil level
- Oil flow regulated by screwdriver adjustment of oil adjustment valve inside body
- Not recommended for constant flow applications
- *For use on reciprocating tools only*
- Can dispense standard air tool lubricant or Dixon anti-freeze lubricant
- Lubricator body is 356-T6 aluminum



Description

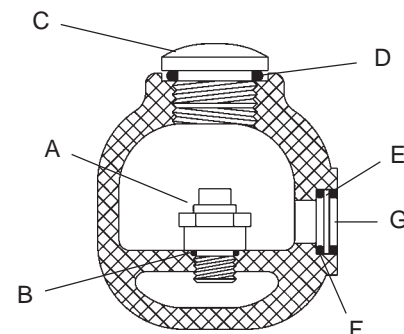
The lubricator has two reservoirs. The upper reservoir holds the oil and a lower reservoir that is the passageway for the air to enter. The air and oil mixture exits through the lower reservoir. The oil adjustment valve between the two compartments initially allows air to enter the reservoir to pressurize it, and then it controls the amount of oil entering the air stream.

How it works

Before the hose is charged with air the pressure in both chambers of the lubricator is equal. When the tool is turned on it draws air from the compressor through the lower chamber. As air passes through the lower chamber it creates an area of low pressure. When the pressure in the lower chamber is less than the pressure in the upper chamber the dual purpose oil adjustment valve allows oil to flow at the set rate into the airstream of the chamber below to lubricate the tool. When the flow of air stops, the oil adjustment valve allows pressure to build in the top chamber until the pressure is equal between the top and bottom. As long as the pressure in the upper chamber is less than or equal to the pressure in the lower chamber no oil will flow through the oil adjustment valve.

Repair Parts (same for all sizes)

Description	Part #
(A) oil adjustment valve assembly	851661
(B) valve gasket	452531
(C) fill plug	452525
(D) fill plug O-ring	700013-214
(E) sight disk	452532
(F) sight disk seal	700013-016
(G) sight disk lock nut	452533



NOTE: All couplings used with reciprocation or impact tools should be used with a whip hose between coupling and the tool. Eye protection should be worn when couplings are connected or disconnected. Use only couplings compatible with media being transferred.

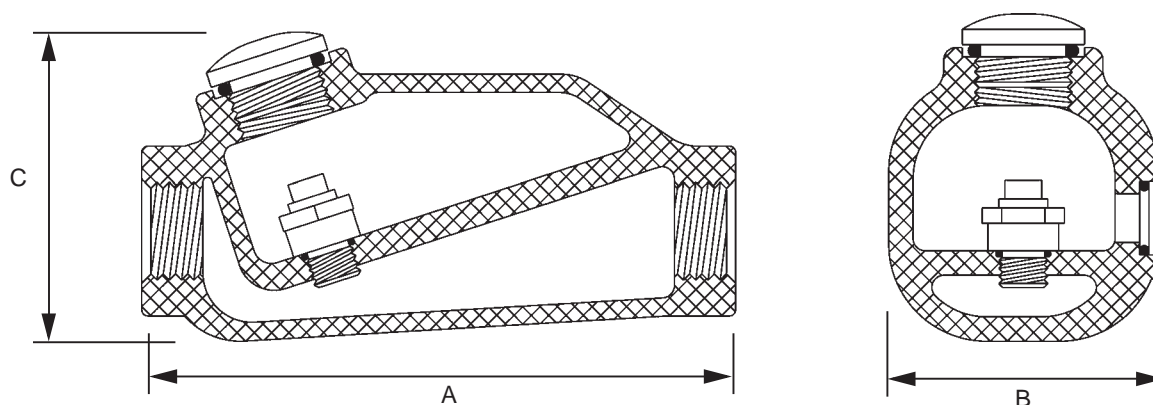
Series PL In-Line Lubricators

Installation

- At start up, additional lubricant is required to coat the inside of the line between the lubricator and the tool. To avoid operating a dry tool, add ½ ounce (15cc) of oil directly into the line.
- By removing the fill plug and using a screwdriver, the operator can adjust the amount of oil flowing into the air stream. It is not necessary to shut off the airflow to do this.
- The viscosity of the oil used and uniqueness of the application determine the right setting for proper lubrication. A setting of 5 is suitable for average conditions using 10-weight oil. Remember that the lag time between adjustment and resulting effect at the tool may be as long as an hour. Make small adjustments, and check the result.

Storage

- The simple principle behind the operation of this lubricator does not provide for oil shut off when the tool is not being used. To prevent a pressure differential from forcing the remaining oil from the reservoir into the air line, turn the lubricator upside down or open the fill plug to depressurize the reservoir.



NPT Sizes	Part #	Oil Capacity	Maximum Working Pressure	Air Flow at 70 PSI	Length A	Width B	Height C	Weight
½"	PL300	1.4 fluid ozs.	500 PSI	30 SCFM	4½"	2¼"	2¼"	14 ozs.
¾"	PL400	3.7 fluid ozs.	200 PSI	70 SCFM	6"	2¾"	2¾"	22 ozs.
¾"	PL400L	11.0 fluid ozs.	300 PSI	70 SCFM	7"	3½"	3¾"	38 ozs.
1"	PL500	16.0 fluid ozs.	250 PSI	100 SCFM	10"	4¼"	4"	69 ozs.

Type of oil to use

Any petroleum-base, non-detergent light weight oil (SAE 10/150SSU) which will readily break up into a mist, i.e., Mobil DTE light or comparable oil. *Do not use any synthetic oil or oils containing additives or solvents.*

Lubricant Part #	Anti-Freeze Part #	Size	pkg qty
DATL016	DATL016W	1 pint	12
DATL128	DATL128W	1 gallon	4



Dixon Valve & Coupling Company

800 High Street
 Chestertown, MD 21620
 800.355.1991
 Fax: 800.283.4966
www.dixonvalve.com