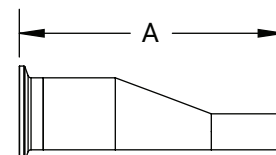
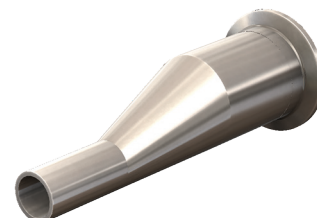


High Purity BioPharm Fittings

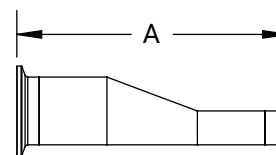
Clamp x Weld Eccentric Reducers - T32M

Tube O.D.	A (in)	Nominal Wall (in)	2007 BPE	2012 BPE	PL Finish - SF1	PM Finish - SF4
3/4" x 1/2"	3.000	0.065		x	T32M-075050PL	T32M-075050PM
1" x 1/2"	3.500	0.065		x	T32M-100050PL	T32M-100050PM
1" x 3/4"	3.000	0.065		x	T32M-100075PL	T32M-100075PM
1-1/2" x 1/2"	4.500	0.065	x		T32M-150050PL	T32M-150050PM
1-1/2" x 3/4"	4.000	0.065		x	T32M-150075PL	T32M-150075PM
1-1/2" x 1"	4.000	0.065		x	T32M-150100PL	T32M-150100PM
2" x 1/2"	6.500	0.065	x		T32M-200050PL	T32M-200050PM
2" x 3/4"	6.000	0.065	x		T32M-200075PL	T32M-200075PM
2" x 1"	6.000	0.065		x	T32M-200100PL	T32M-200100PM
2" x 1-1/2"	4.000	0.065		x	T32M-200150PL	T32M-200150PM
2-1/2" x 1/2"	8.500	0.065	x		T32M-250050PL	T32M-250050PM
2-1/2" x 3/4"	8.000	0.065	x		T32M-250075PL	T32M-250075PM
2-1/2" x 1"	8.000	0.065	x		T32M-250100PL	T32M-250100PM
2-1/2" x 1-1/2"	6.000	0.065		x	T32M-250150PL	T32M-250150PM
2-1/2" x 2"	4.250	0.065		x	T32M-250200PL	T32M-250200PM
3" x 1"	10.000	0.065	x		T32M-300100PL	T32M-300100PM
3" x 1-1/2"	8.000	0.065		x	T32M-300150PL	T32M-300150PM
3" x 2"	6.250	0.065		x	T32M-300200PL	T32M-300200PM
3" x 2-1/2"	4.250	0.065		x	T32M-300250PL	T32M-300250PM
4" x 1"	14.125	0.065	x		T32M-400100PL	T32M-400100PM
4" x 1-1/2"	12.125	0.065	x		T32M-400150PL	T32M-400150PM
4" x 2"	10.375	0.065		x	T32M-400200PL	T32M-400200PM
4" x 2-1/2"	8.375	0.065		x	T32M-400250PL	T32M-400250PM
4" x 3"	6.375	0.065		x	T32M-400300PL	T32M-400300PM
6" x 3"	8.750	0.065		x	T32M-600300PL	T32M-600300PM
6" x 4"	9.000	0.083		x	T32M-600400PL	T32M-600400PM



Clamp x Clamp Eccentric Reducers - T3214MP

Tube O.D.	A (in)	2007 BPE	2012 BPE	PL Finish - SF1	PM Finish - SF4
3/4" x 1/2"	2.000		x	T3214MP075050PL	T3214MP075050PM
1" x 1/2"	2.500		x	T3214MP100050PL	T3214MP100050PM
1" x 3/4"	2.000		x	T3214MP100075PL	T3214MP100075PM
1-1/2" x 1/2"	3.500	x		T3214MP150050PL	T3214MP150050PM
1-1/2" x 3/4"	3.000		x	T3214MP150075PL	T3214MP150075PM
1-1/2" x 1"	3.000		x	T3214MP150100PL	T3214MP150100PM
2" x 1/2"	5.500	x		T3214MP200050PL	T3214MP200050PM
2" x 3/4"	5.000	x		T3214MP200075PL	T3214MP200075PM
2" x 1"	5.000		x	T3214MP200100PL	T3214MP200100PM
2" x 1-1/2"	3.000		x	T3214MP200150PL	T3214MP200150PM
2-1/2" x 1/2"	7.500	x		T3214MP250050PL	T3214MP250050PM
2-1/2" x 3/4"	7.000	x		T3214MP250075PL	T3214MP250075PM
2-1/2" x 1"	7.000	x		T3214MP250100PL	T3214MP250100PM
2-1/2" x 1-1/2"	5.000		x	T3214MP250150PL	T3214MP250150PM
2-1/2" x 2"	3.000		x	T3214MP250200PL	T3214MP250200PM
3" x 1"	9.000	x		T3214MP300100PL	T3214MP300100PM
3" x 1-1/2"	7.000		x	T3214MP300150PL	T3214MP300150PM
3" x 2"	5.000		x	T3214MP300200PL	T3214MP300200PM
3" x 2-1/2"	3.000		x	T3214MP300250PL	T3214MP300250PM
4" x 1"	13.125	x		T3214MP400100PL	T3214MP400100PM
4" x 1-1/2"	11.125	x		T3214MP400150PL	T3214MP400150PM
4" x 2"	9.125		x	T3214MP400200PL	T3214MP400200PM
4" x 2-1/2"	7.125		x	T3214MP400250PL	T3214MP400250PM
4" x 3"	5.125		x	T3214MP400300PL	T3214MP400300PM
6" x 3"	7.625		x	T3214MP600300PL	T3214MP600300PM
6" x 4"	7.625		x	T3214MP600400PL	T3214MP600400PM



NOTE: BPE 2007 or 2012 Specifications as indicated

PL Finish - SF1

PM Finish - SF4

O.D. = 32Ra Mechanically Polished O.D. = 32Ra Mechanically Polished

I.D. = 20Ra Mechanically Polished I.D. = 15Ra Mechanically Polished and Electropolished