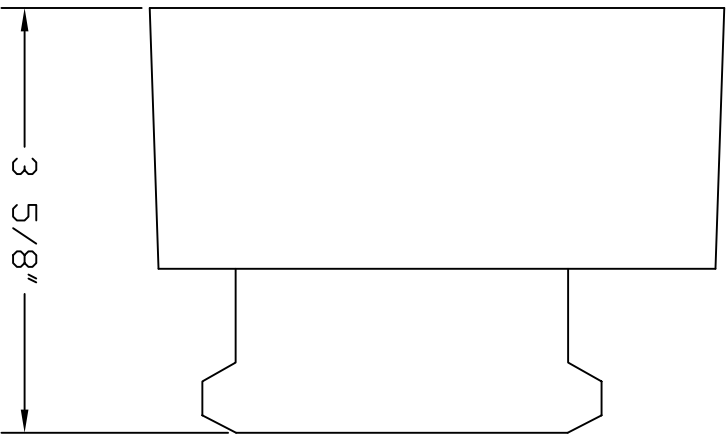


Ø 7/16 THRU HOLES  
(2) PLCS AS SHOWN  
180° APART  
DN A Ø 3 B.C.



REVISIONS			
REV	DESCRIPTION	DATE	APPROVED

**Dixon Bayco USA**  
Cincinnati, Ohio, U.S.A.  
A DWG. Inc. Company

TITLE  
**FT30X SERIES SOCKET**

THIS DRAWING IS CONFIDENTIAL PROPERTY OF  
DIXON BAYCO USA. REPRODUCTION OR  
USE IN ANY MANNER WITHOUT THE WRITTEN  
CONSENT OF DIXON BAYCO USA IS  
SUBJECT TO PENALTY ON DEMAND.  
© COPYRIGHT 2000  
DO NOT COPY.  
DIM. TOLERANCES UNLESS SPECIFIED:  
INCHES: ± .005 ± .010 ± .020  
MILLIMETERS: ± .025 ± .050 ± .100  
ROUGH DIMS: ± .125

SIZE: **B** DRAWN BY: **RCK** DWG. NO.: **FT30X-CST** REV: **-**  
SCALE: NONE DATE: 05MAY04 SHEET 1 OF 1