

Excelon® design allows in-line or modular installation

Manifold typically up to six regulators without booster signal

RoHS compliant



Technical data

Fluid:

Compressed air, neutral gases
 NOTE: Contact technical support for use with other media.

R72M

Maximum pressure:

300 psig (20 bar)

Operating temperature*:

-30° to 150°F (-34° to 65°C)

* Air supply must be dry enough to avoid ice formation at temperatures below 35°F (2°C).

Ports:

Inlet ports (2):

1/4" or 3/8" PTF or ISO G

Outlet port (1):

1/4" PTF with PTF inlet ports, or

1/4" ISO G with ISO G inlet ports

Gauge port (1):

1/8" PTF with PTF inlet ports

1/8" ISO Rc with ISO G inlet ports

Materials

Body: zinc

Bonnet: acetal

(Zinc on 250 psi (17 bar)

T-handle version)

Elastomers: nitrile

Bottom plug: acetal

R74M

Maximum pressure:

300 psig (20 bar)

Operating temperature*:

R74M: -30° to 175°F (-34° to

80°C)

* Air supply must be dry enough to

avoid ice formation at temperatures below 35°F (2°C).

Ports

Inlet ports (2):

1/2" or 3/4" PTF or ISO G

Outlet port (1):

1/2" PTF with PTF inlet ports, or

1/2" G with ISO G inlet ports

Gauge port (1):

1/8" PTF with PTF inlet ports

1/8" ISO Rc with ISO G inlet ports

Materials

Body: aluminum

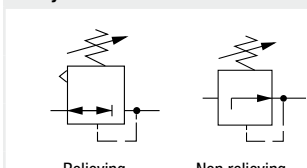
Bonnet: aluminum

Elastomers: nitrile

Bottom plug: acetal

Ordering information

Models listed include PTF threads, knob adjustment, relieving diaphragm, 5 to 150 psig (0.3 to 10 bar) outlet pressure adjustment range* with gauge.

ISO Symbols	Inlet Port (2)	Outlet Port (1)	Model	Flow† scfm (dm ³ /s)	Weight lb (kg)
 <p>Relieving Non-relieving</p>	1/4"	1/4"	R72M 2AK RMG	83 (39)	0.79 (0.36)
	3/8"	1/4"	R72M 3AK RMG	83 (39)	0.79 (0.36)
	1/2"	1/2"	R74M 4AK RMG	220 (105)	1.77 (0.8)
	3/4"	1/2"	R74M 6AK RMG	220 (105)	1.73 (0.78)

† Typical flow with 150 psig (10 bar) inlet pressure, 90 psig (6.3 bar) set pressure and a 15 psig (1 bar) droop from set.

Alternative Models

R7★M - ★★ - ★★

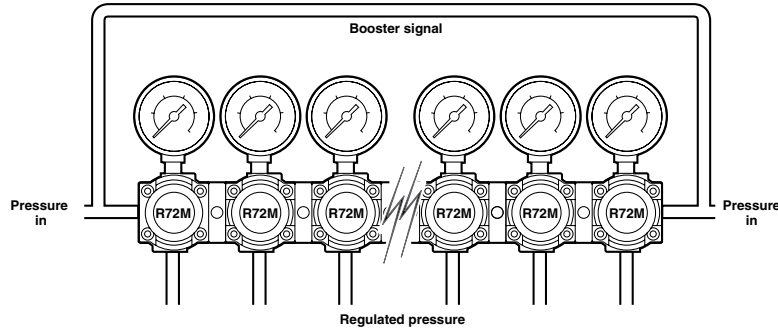
Series	Substitute
72	2
74	4
Inlet Port Size	Substitute
1/4" (72)	2
3/8" (72)	3
1/2" (74)	4
3/4" (74)	6
Threads	Substitute
PTF	A
ISO G parallel	G

* Outlet pressure can be adjusted to pressures in excess of, and less than, those specified. Do not use these units to control pressures outside of the specified ranges.

Gauge	Substitute
With	G
Without	N
Outlet Pressure Adjustment Range*	Substitute
5 to 30 psig (0.3 to 2 bar) (R72M)	C
5 to 60 psig (0.3 to 4 bar)	F
5 to 150 psig (0.3 to 10 bar)	M
10 to 250 psig (0.7 to 17 bar)**	S
Diaphragm	Substitute
Relieving	R
Non relieving	N
Adjustment	Substitute
Knob	K
T-bar	T

** Units with 250 psig (17 bar) outlet pressure range are available only with the T-bar adjustment. Substitute "T" in the 7th position and "S" in the 9th position.

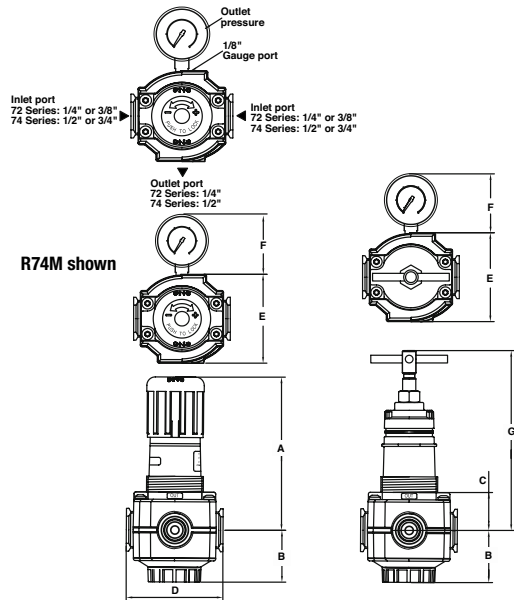
Typical Manifold Regulator Application (R72M shown)



Accessories

	Wall mounting bracket*	Neck mounting bracket	Gauge 0 ... 160 psig	Panel nut	Tamper resistant cover and seal wire	Pipe adapters (quantity of 1) (NPT)	Quikclamp®	Quikclamp® and wall bracket	Service kit
R72M	4224-50	74316-50	18-013-273	4248-89	4255-51	4215-02 (1/4) 4215-03 (3/8)	4214-51	4214-52	4381-500
R74M	4324-50	4368-51	18-013-273	4348-89	4355-51	4315-02 (3/8) 4315-03 (1/2) 4315-04 (3/4)	4314-51	4314-52	4381-700

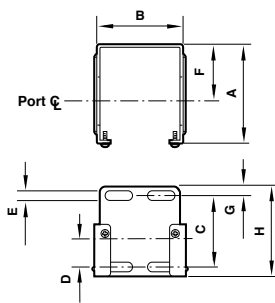
* Bracket kit does not include wall mounting screws.



Series	A	B	C	D	E	F	G	Panel Ø	Panel depth
72	2.88 (73.3)	1.31 (33.2)	1.01 (25.7)	1.98 (50.2)	1.91 (48.4)	1.90 (48.3)	4.03/4.25** (102.2/108)	1.57 (39)	0 to 0.16 (0 to 4)
74	4.98 (126.6)	1.69 (43.0)	1.24 (31.4)	3.1 (80.0)	2.89 (73.5)	2.72 (69.0)	5.86 (148.8)	2.05 (52)	0.07 to 0.25 (1.8 to 6)

** 72 Series 250 psi version with Zinc bonnet and T-handle.

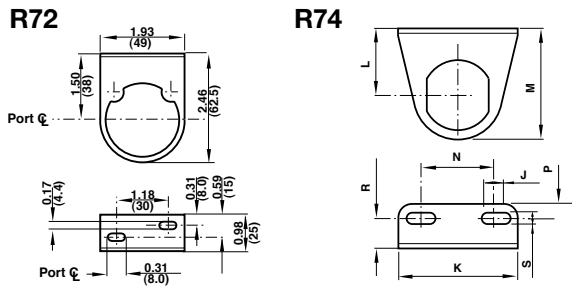
Mounting bracket



Series	A	B	C	D	E	F	G	H
72	2.36 (60)	1.65 (42)	1.54 (39)	0.73 (19)	0.16 (4)	1.50 (38)	0.24 (6)	2.01 (51)
74	3.11 (79)	2.72 (69)	1.97 (50)	0.79 (20)	0.20 (5)	2.01 (51)	0.24 (6)	2.40 (61)

Dimensions in inches (mm)

Neck mounting brackets



Series	J	K	L	M	N	P	R	S	T	V
72	0.31 (8)	1.93 (49)	1.50 (38)	2.50 (64)	1.18 (30)	0.94 (24)	-	0.17 (4)	0.31 (8)	0.59 (15)
74	0.94 (24)	3.50 (89)	2.05 (52)	3.39 (86)	2.20 (56)	1.38 (35)	0.91 (23)	0.28 (7)	-	-

Typical Performance Characteristics

