

Butterfly Valves

Materials:

- body and disc: 316L
- seat: EPDM, FKM, (6" EPDM and silicone, 8" EPDM only)

Features:

- low resistance to flow
- bi-directions flow
- gentle to media
- suitable for low and medium viscosity fluids
- can be serviced in the field
- self-draining
- various manual or automatic operators available, call Dixon Sanitary for details 800.789.1718
- optional wing nut kit is available for easy assembly and disassembly
- 100% hydraulic tested / 100% inspected

Specifications:

- vacuum rating: 0.4 inches Hg at 68°F (20°C)
- operating temperature range: 15°F to 200°F (-9°C to 93°C)

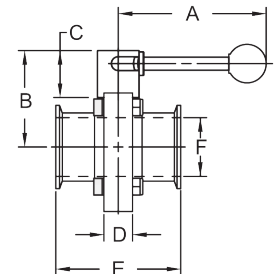
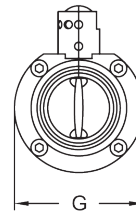
Clamp End with Pull Handle - [A]

| Size | 316L Stainless Steel with Silicone Seats Part # | 316L Stainless Steel with FKM Seats Part # | 316L Stainless Steel with EPDM Seats Part # |
|-----------------|---|--|---|
| 1/2" | B5101S050CC-A | B5101V050CC-A | B5101E050CC-A |
| 3/4" | B5101S075CC-A | B5101V075CC-A | B5101E075CC-A |
| 1" | B5101S100CC-A | B5101V100CC-A | B5101E100CC-A |
| 1 1/2" | B5101S150CC-A | B5101V150CC-A | B5101E150CC-A |
| 2" | B5101S200CC-A | B5101V200CC-A | B5101E200CC-A |
| 2 1/2" | B5101S250CC-A | B5101V250CC-A | B5101E250CC-A |
| 3" | B5101S300CC-A | B5101V300CC-A | B5101E300CC-A |
| 4" ¹ | B5101S400CC-A | B5101V400CC-A | B5101E400CC-A |
| 6" | B5101S600CC-A | --- | B5101E600CC-A |
| 8" | --- | --- | B5101E800CC-A |

¹ 4" high pressure butterfly valve is available, call Dixon® for more information



| Size | Dimensions | | | | | | |
|--------|------------|------|------|------|------|------|-------|
| | A | B | C | D | E | F | G |
| 1/2" | 4.4" | 2.8" | 1.4" | 0.9" | 3.5" | .37" | 3.1" |
| 3/4" | 4.4" | 2.8" | 1.4" | 0.9" | 3.5" | .62" | 3.1" |
| 1" | 4.4" | 2.8" | 1.4" | 0.9" | 3.5" | 0.9" | 3.1" |
| 1 1/2" | 4.4" | 2.8" | 1.4" | 0.9" | 3.5" | 1.4" | 3.1" |
| 2" | 4.4" | 3.1" | 1.4" | 0.9" | 3.8" | 1.9" | 3.9" |
| 2 1/2" | 4.4" | 3.5" | 1.4" | 0.9" | 3.8" | 2.4" | 4.6" |
| 3" | 6.2" | 3.8" | 1.3" | 1.2" | 4.1" | 2.9" | 5.2" |
| 4" | 6.2" | 4.5" | 1.3" | 1.2" | 4.8" | 3.8" | 6.7" |
| 6" | 11.5" | 5.5" | 1.3" | 1.2" | 5.5" | 5.8" | 8.5" |
| 8" | 18.0" | 6.9" | 1.6" | 1.2" | 4.9" | 7.8" | 11.2" |



Clamp End with Infinite Position Handle - [B]

| Size | 316L Stainless Steel with Silicone Seats Part # | 316L Stainless Steel with FKM Seats Part # | 316L Stainless Steel with EPDM Seats Part # |
|--------|---|--|---|
| 1/2" | B5101S050CC-B | B5101V050CC-B | B5101E050CC-B |
| 3/4" | B5101S075CC-B | B5101V075CC-B | B5101E075CC-B |
| 1" | B5101S100CC-B | B5101V100CC-B | B5101E100CC-B |
| 1 1/2" | B5101S150CC-B | B5101V150CC-B | B5101E150CC-B |
| 2" | B5101S200CC-B | B5101V200CC-B | B5101E200CC-B |
| 2 1/2" | B5101S250CC-B | B5101V250CC-B | B5101E250CC-B |
| 3" | B5101S300CC-B | B5101V300CC-B | B5101E300CC-B |
| 4" | B5101S400CC-B | B5101V400CC-B | B5101E400CC-B |



| Size | Dimensions | | | | | | |
|--------|------------|------|------|------|------|-------|------|
| | A | B | C | D | E | F | G |
| 1/2" | 4.3" | 2.6" | 1.3" | 0.9" | 3.5" | .37" | 3.1" |
| 3/4" | 4.3" | 2.6" | 1.3" | 0.9" | 3.5" | .62" | 3.1" |
| 1" | 4.3" | 2.6" | 1.3" | 0.9" | 3.5" | .90" | 3.1" |
| 1 1/2" | 4.3" | 2.6" | 1.3" | 0.9" | 3.5" | 1.40" | 3.1" |
| 2" | 4.3" | 2.9" | 1.3" | 0.9" | 3.8" | 1.90" | 3.9" |
| 2 1/2" | 4.3" | 3.3" | 1.3" | 0.9" | 3.8" | 2.40" | 4.6" |
| 3" | 6.4" | 3.6" | 1.3" | 1.2" | 4.1" | 2.90" | 5.2" |
| 4" | 6.4" | 4.4" | 1.3" | 1.2" | 4.8" | 3.80" | 6.7" |

